

Entransy Analysis of an Irreversible Diesel Cycle

Emin Açıkkalp*

Department of Mechanical and Manufacturing Engineering, Engineering Faculty, Bilecik S.E. University, Bilecik, Turkey

Abstract: The purpose of this paper is to research an irreversible Diesel cycle by using entransy approach. Entransy may be expressed as heat transfer potential of a subject and it has begun to investigate as a new thermodynamic assessment parameter. Optimization of heat transfer processes is very important, because of their extensity. Result of optimizing heat transfer is to use energy efficiently and decrease CO₂ emission that is main reason of the global warming. Because of the these reasons, entransy analysis of a Diesel cycle is investigated and result are presented. Some obtained results for entransy analysis are: entransy efficiency has minimum (0.191) at $x = 19.296$, \dot{G}_d has a maximum (1.538×10^6 kW K) at $x = 8.316$ for $\eta_E = \eta_C = 1$. cycle and has a maximum point at $x = 6.959$ and it value is 1.341×10^6 kW K for $\eta_E = \eta_C = 0.8$.

Keywords: Entransy, irreversibility, Diesel cycle, exergy.

1. INTRODUCTION

Heat transfer is energy flow resulting from temperature difference and it is the most convenient energy transfer mechanism at the energy conversion systems. More than 80 % of the energy system is predicted that it consists of heat transfer process. Improved heat transfer processes have potential to decrease CO₂ emission that is the most important reason of the global warming [1-3]. Because of the results referred above, a method was developed for optimizing heat transfer processes called as entransy. Entransy may be defined as heat transfer ability of a system. Thermodynamically, heat transfer is an irreversible process and there are always entransy dissipation result of heat transfer. This phenomena is similar to exergy destruction that is irreversible work resulting from irreversibilities in a system. Entransy concept is very similar to electrical capacitor and is defined as following [4]:

$$G = \frac{1}{2}QT \quad (1)$$

where, G (kJK) is entransy; Q (kJ) is stored heat energy in the subject and T (K) is the temperature of the subject. Similar to energy and exergy balance equation, entransy dissipation is: [5]:

$$\dot{G}_H - \dot{G}_L - \dot{G}_d - \dot{G}_w = 0 \quad (2)$$

where, \dot{G}_H is entransy rate of added heat, \dot{G}_L is entransy rate of the rejected heat, \dot{G}_d is entransy dissipation rate and \dot{G}_w entransy rate to environment via work.

In literature, although there are studies about entransy [3-35], a small part of these are about thermodynamic cycles [4-8]. In this paper, irreversible Diesel cycle is investigated by using entransy approach first time and results are compared with classical thermodynamic parameters.

2. SYSTEM DESCRIPTION AND THERMODYNAMIC ANALYSIS

In this study, an irreversible Diesel cycle is analyzed according to entransy approach and classical thermodynamic evaluation parameters. In the thermodynamic analysis assumptions listed following are applied:

- System is in steady state conditions
- All processes are irreversible.
- Environmental conditions are T_o 298.15 (K) and P_o 100 (kPa).
- Specific heats are independent from the temperature. Specific heat at constant pressure is, C_p 1.005 (kJ/kg) and isentropic coefficient is k 1.04.
- Fluid used in the system is air and it is assumed as ideal gas.

*Address correspondence to this author at the Department of Mechanical and Manufacturing Engineering, Engineering Faculty, Bilecik S.E. University, Bilecik, Turkey; Tel: +90 (228) 2160061; Fax: +90 (228) 216 05 88; E-mail: acikkalp@gmail.com

$$\frac{P_2}{P_1} = \frac{P_3}{P_4}$$

Heat transfer rate is (\dot{Q}):

$$\dot{Q} = \dot{m} c_p dT \quad (3)$$

Temperature- entropy diagram (T-S) of the system can be seen in Figure 1.

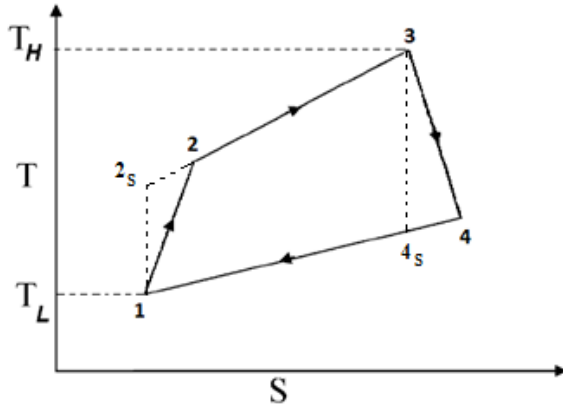


Figure 1: T-s diagram of the irreversible Diesel cycle [36,37].

Added heat and rejected heat from the irreversible Diesel cycle is described as following respectively:

$$\dot{Q}_H = \dot{m} c_p \int_2^3 dT = \dot{m} c_p (T_3 - T_2) \quad (4)$$

$$\dot{Q}_L = \dot{m} c_v \int_1^4 dT = \dot{m} c_v (T_4 - T_1) \quad (5)$$

where, \dot{m} mass rate at the system (kg/s). Entropy rate is:

$$\dot{G} = \dot{m} c T dT \quad (6)$$

Added heat, rejected heat entropy and entropy rate by means of work to environment are defined as following respectively:

$$\dot{G}_H = \dot{m} c_p \int_2^3 T dT = \frac{\dot{m} c_p (T_3^2 - T_2^2)}{2} \quad (7)$$

$$\dot{G}_L = \dot{m} c_v \int_1^4 T dT = \frac{\dot{m} c_v (T_4^2 - T_1^2)}{2} \quad (8)$$

$$\dot{G}_W = \dot{W} T_o \quad (9)$$

Relations between reversible and irreversible cycles can be obtained by using compression and expansion efficiencies [37-43]:

$$\eta_C = \frac{T_{2S} - T_1}{T_2 - T_1}, \quad \eta_E = \frac{T_4 - T_3}{T_{4S} - T_3} \quad (10)$$

Work output, exergy output, energy efficiency, exergy efficiency, entropy generation, equations are described as following respectively:

$$\dot{W} = \dot{Q}_H - \dot{Q}_L \quad (11)$$

$$Ex = \dot{Q}_H \left(1 - \frac{T_o}{T_H} \right) \quad (12)$$

$$\eta = \frac{\dot{W}}{\dot{Q}_H} \quad (13)$$

$$\varphi = \frac{\dot{W}}{Ex} \quad (14)$$

$$S_{gen} = \left(\frac{\dot{Q}_L}{T_L} - \frac{\dot{Q}_H}{T_H} \right) \quad (15)$$

Second law of the thermodynamics can be expressed by using Clausius equation.

$$\frac{\dot{Q}_H}{T_H} - \frac{\dot{Q}_L}{T_L} \leq 0 \quad (16)$$

This inequality can be converted to equality by means of defining an internal irreversibility parameter (I):

$$I \frac{\dot{Q}_H}{T_H} = \frac{\dot{Q}_L}{T_L} \quad (17)$$

Using equation (17), equation (18) can be obtained:

$$I = \frac{\dot{Q}_L T_H}{\dot{Q}_H T_L} \quad (18)$$

For the reversible Diesel cycle T_2 and T_4 are:

$$T_{2S} = x^{k-1} T_1 \quad (19)$$

$$T_{4S} = \frac{T_3}{x^{k-1}} \quad (20)$$

where $x \left(\frac{V_1}{V_2} \right)$ is compression ratio, T_2 and T_4 can be defined again by using equations (10), (19) ve (20):

$$T_2 = \frac{(T_{2s} - T_1)}{\eta_c} + T_1 \tag{21}$$

$$T_4 = T_4 + (T_{4s} - T_3)\eta_E \tag{22}$$

using equations (2-20), all parameters are defined again following.

$$\dot{W} = c_v \cdot \dot{m} \cdot ((T_1 + T_3)(\eta_E - 1 - \eta_E \cdot x^{1-k})) + \frac{c_p \cdot \dot{m} \cdot (\eta_c \cdot T_3 \cdot x - T_1 \cdot ((\eta_c - 1) \cdot x + x^k))}{\eta_c \cdot x} \tag{23}$$

$$Ex = c_p \cdot \dot{m} \cdot \left(1 - \frac{T_o}{T_3}\right) \left(T_3 + T_1 \left(\frac{1 - x^{-1+k}}{\eta_c} - 1\right)\right) \tag{24}$$

$$\eta = \frac{x^{-k} \cdot \left(\begin{matrix} c_v \cdot \eta_c \cdot x (T_3 - T_1) x^k - \eta_E \cdot T_3 (x^k - x) \\ + c_p \cdot x^k (T_1 \cdot (x^k + (\eta_c - 1))) - \eta_c \cdot T_3 \cdot x \end{matrix} \right)}{c_p \cdot (T_1 \cdot ((\eta_c - 1) \cdot x + x^k) - \eta_c \cdot T_3 \cdot x)} \tag{25}$$

$$\varphi = \frac{T_3 \cdot x^{-k} \cdot (c_v \cdot \eta_c \cdot x (T_1 - T_3) x^k + \eta_E \cdot T_3 (x^k - x)) - c_p \cdot x^k \cdot (T_1 \cdot (\eta_c - 1) \cdot x + x^k - \eta_c \cdot T_3 \cdot x)}{c_p \cdot (T_1 - T_3) (T_1 \cdot ((\eta_c - 1) \cdot x + x^k) - \eta_c \cdot T_3 \cdot x)} \tag{26}$$

$$ExD = T_o \cdot \dot{m} \cdot \left(\left(\frac{c_p \cdot (T_1 \cdot ((\eta_c - 1) \cdot x + x^k - \eta_c \cdot T_3 \cdot x))}{\eta_c \cdot T_3 \cdot x} + \right) \left(\frac{c_p \cdot (T_3 \cdot (1 + \eta_E \cdot (x^{1-k} - 1)) - T_1)}{T_1} \right) \right) \tag{27}$$

$$I = \frac{c_v \cdot T_3 \cdot (T_3 \cdot (1 + \eta_E \cdot (x^{1-k} - 1)) - T_1)}{c_p \cdot T_1 \cdot \left(T_3 + T_1 \cdot \left(\frac{(1 - x^{1-k})}{\eta_c} - 1 \right) \right)} \tag{28}$$

$$\dot{G}_H = \frac{c_p \cdot \dot{m} \cdot \left(T_3^2 - \left(T_1 + \frac{T_1 \cdot (x^{(-1+k)} - 1)}{\eta_c} \right)^2 \right)}{2} \tag{29}$$

$$\dot{G}_L = \frac{c_v \cdot \dot{m} \cdot ((T_3 - \eta_E T_3 + \eta_E T_3 x^{(1-k)})^2 - T_1^2)}{2} \tag{30}$$

$$\dot{G}_W = T_o \cdot \left(\frac{c_v \cdot \dot{m} \cdot (T_1 + T_3 (\eta_E - 1 - \eta_E \cdot x^{1-k}))}{c_p \cdot \dot{m} \cdot (\eta_c \cdot T_3 \cdot x - T_1 \cdot ((\eta_c - 1) \cdot x + x^k))} + \frac{1}{\eta_c \cdot x} \right) \tag{31}$$

$$\dot{G}_d = \frac{c_p \cdot \dot{m} \cdot \left(T_3^2 - \left(T_1 + \frac{T_1 \cdot (x^{(-1+k)} - 1)}{\eta_c} \right)^2 \right)}{2} - T_o \cdot \left(\frac{c_v \cdot \dot{m} \cdot (T_1 + T_3 (\eta_E - 1 - \eta_E \cdot x^{1-k}))}{c_p \cdot \dot{m} \cdot (\eta_c \cdot T_3 \cdot x - T_1 \cdot ((\eta_c - 1) \cdot x + x^k))} + \frac{1}{\eta_c \cdot x} \right) - \frac{c_v \cdot \dot{m} \cdot ((T_3 - \eta_E T_3 + \eta_E T_3 x^{(1-k)})^2 - T_1^2)}{2} \tag{32}$$

where ExD represents exergy destruction and it is obtained by multiplying environmental temperature with entropy generation. In addition, its physical meaning is that a measurement of the lost work based on entropy generation. Entropy efficiency is:

$$\gamma = \frac{\dot{G}_L}{\dot{G}_H} \tag{33}$$

using the above equations it can be described as:

$$\gamma = \frac{c_v \cdot ((T_3 - \eta_E T_3 + \eta_E T_3 x^{(1-k)})^2 - T_1^2)}{c_p \cdot \left(T_3^2 - \left(T_1 + \frac{T_1 \cdot (x^{(-1+k)} - 1)}{\eta_c} \right)^2 \right)} \tag{34}$$

3. RESULTS AND DISCUSSION

In this study, entransy analysis is performed for the irreversible Diesel cycle and relations with other thermodynamic parameters are investigated. Diesel cycle is already external irreversible and an internal irreversibility parameter is defined to obtain a total irreversible cycle. Analyses are performed for the cases that $\eta_E = \eta_c$ are 1 and 0.8. Results of analyses can be shown in Figures 2-7. In Figures 2-4, represent endoreversible or internal irreversible ($\eta_E = \eta_c = 1$) Diesel cycle. According to entransy analysis results obtained these figures show result: \dot{G}_H decreases linearly according to x and \dot{G}_L and \dot{G}_D changes logarithmically with x . \dot{G}_L decrease logarithmically while \dot{G}_D increases until a maximum point (1.538×10^6 kW K), which can be called as critical point, at $x = 8.316$ and then it starts to decrease logarithmically according to x . Conventional thermodynamic parameters is illustrated in Figure 3. It can be seen that ExD and I decrease logarithmically with x . However, \dot{W} increase until a maximum point, which is called as optimum point, (984.001 kW) at $x = 6.333$, after this point it begins to decrease. In Figure 4, energy, exergy and entransy efficiencies are investigated as well as entransy loss ratio η and φ increases with x while ε decreases. γ increases according to x too, however, increasing rate of it is faster than η and φ .

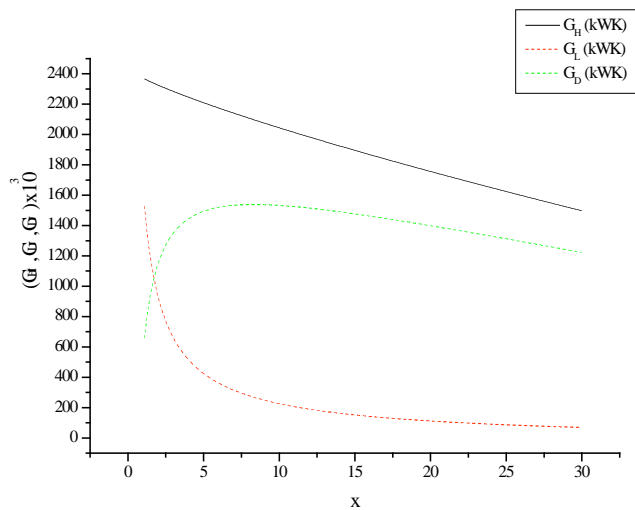


Figure 2: Variation of \dot{G}_H , \dot{G}_L and \dot{G}_D , according to x ($\eta_E = \eta_C = 1$).

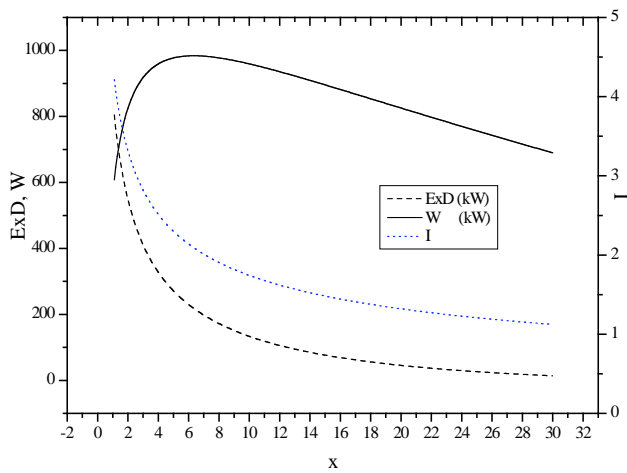


Figure 3: Variation of ExD , \dot{W} and I , according to x ($\eta_E = \eta_C = 1$).

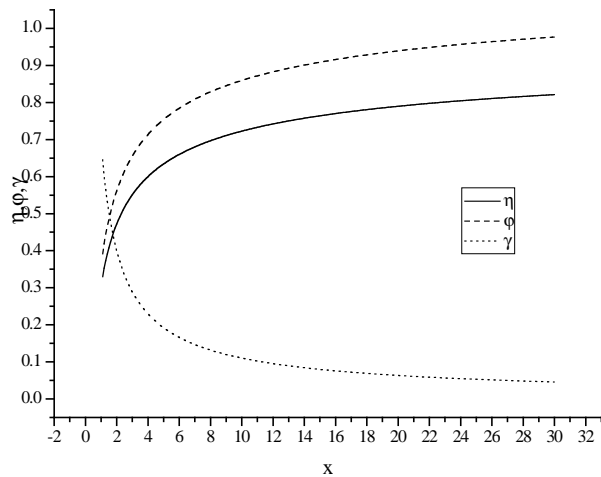


Figure 4: Variation of η , ϕ , λ and ϵ , according to x ($\eta_E = \eta_C = 1$).

Results for the system with $\eta_E = \eta_C = 0.8$ can be found in Figures 5-7. In Figure 5, entransy tendency of the system is equal to previous one except that \dot{G}_D has different critical point. This point is at $x = 6.959$ and its value is $(1.341 \times 10^6 \text{ kW K})$. As it can be seen in Figure 6, I and \dot{W} has optimum points (a maximum point for \dot{W} and a minimum point for I). \dot{W} and I change logarithmically. \dot{W} increases its optimum point (763.939 kW) at $x = 3.625$, after this point it starts to decrease. I decreases until its optimum point (2.911) $x = 9.488$ and then it begins to raise. Similar to previous system, ExD decreases logarithmically. Energy, exergy, entransy efficiencies and entransy loss ratio. All of these parameters have maximum or minimum points. Energy and exergy efficiencies have a maximum (or optimum point). These efficiencies increase to their optimum and then they start to diminish. Optimum points for energy and exergy efficiencies are 0.537 and

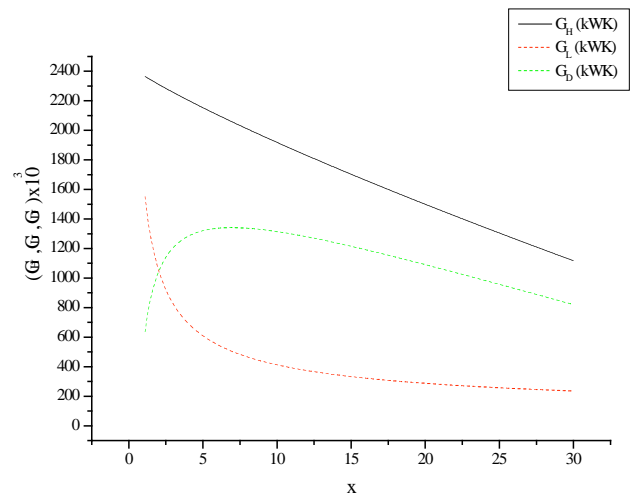


Figure 5: Variation of \dot{G}_H , \dot{G}_L and \dot{G}_D , according to x ($\eta_E = \eta_C = 0.8$).

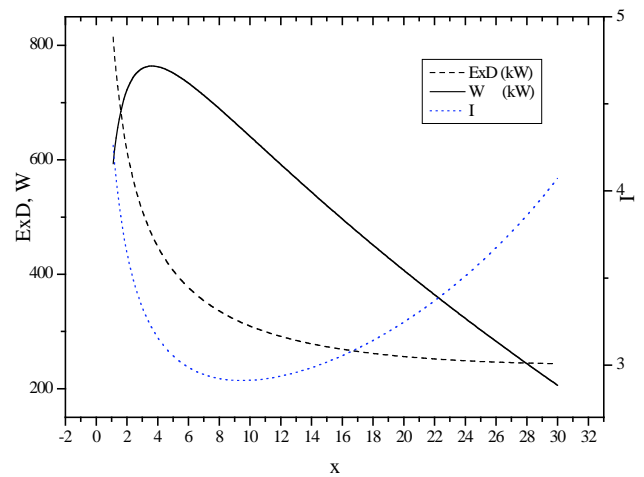


Figure 6: Variation of ExD , \dot{W} and I , according to x ($\eta_E = \eta_C = 0.8$).

0.638 respectively at same point $x= 9.488$. Entransy efficiency has minimum or it can be called critical point (0.191) at $x = 19.296$. This parameter decrease until this point after it shows a little raising.

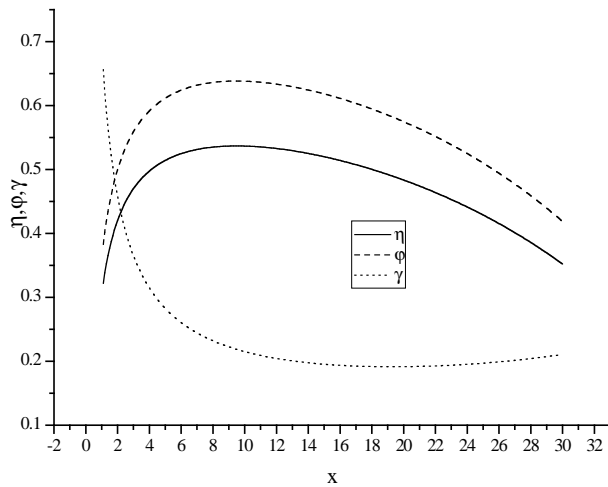


Figure 7: Variation of η , ϕ , λ and ε , according to x ($\eta_E = \eta_C = 0.8$).

4. CONCLUSIONS

In this paper, irreversible Diesel cycle are investigated according to entransy approach and results are compared with thermodynamic performance parameters. In the previous section results are searched detail and this section these are interpreted following:

- Decreasing η_E and η_C causes decreasing at \dot{G}_H and \dot{G}_D , however, it causes raising at \dot{G}_L according to x .
- Decreasing η_E and η_C causes increasing at ExD and I . However, while $\eta_E = \eta_C = 0.8$, I has a minimum. After the minimum point, it increases. It can be said that η_E and η_C has maximum or minimum, if they are smaller than 1. Similarly, Decreasing η_E and η_C causes smaller work values and for smaller η_E and η_C decreasing rate of it is faster.
- For $\eta_E = \eta_C = 1$ any optimum or critical point does not exist for η , ϕ , ε and γ . In contrast to this, all of these parameters have maximum or minimum points, when $\eta_E = \eta_C = 0.8$. Maximum points for energy and exergy efficiencies are 0.537 and 0.638 respectively at $x= 9.488$. Entransy efficiency has minimum point (0.191) at $x = 19.296$.

- \dot{G}_D has a maximum (1.538×10^6 kW K) at $x = 8.316$ for endoreversible cycle and has a maximum point at $x = 6.959$ and its value is 1.341×10^6 kW K for $\eta_E = \eta_C = 0.8$. It

It is recommended that entransy should be investigated among basic thermodynamic parameters while analyzing a thermal system.

REFERENCES

- [1] Wang W, Cheng XT, Liang XG. Entransy theory for the optimization of heat transfer - A review and update. *Int J Heat Mass Transfer* 2013; 63: 65-81. <http://dx.doi.org/10.1016/j.ijheatmasstransfer.2013.03.019>
- [2] Bergles AE. Heat transfer enhancement - the maturing of second-generation heat transfer technology. *Heat Transfer Eng* 1997; 18: 47-55. <http://dx.doi.org/10.1080/01457639708939889>
- [3] Webb RL. Principles of Enhanced Heat Transfer. John Wiley & Sons, New York 1994.
- [4] Guo ZY, Zhu HY, Liang XG. Entransy—a physical quantity describing heat transfer ability. *Int J Heat Mass Transfer* 2007; 50: 2545-56. <http://dx.doi.org/10.1016/j.ijheatmasstransfer.2006.11.034>
- [5] Cheng XT, Liang XG. Entransy loss in thermodynamic processes and its application. *Energy* 2012; 44: 964-72. <http://dx.doi.org/10.1016/j.energy.2012.04.054>
- [6] Xu MT. The thermodynamic basis of entransy and entransy dissipation. *Energy* 2011; 36: 4272-7. <http://dx.doi.org/10.1016/j.energy.2011.04.016>
- [7] Cheng XT, Wang WH, Liang XG. Entransy analysis of open thermodynamic systems. *Chin Sci Bull* 2012; 57: 2934-40. <http://dx.doi.org/10.1007/s11434-012-5224-x>
- [8] Wang W, Cheng XT, Liang XG. Entropy and entransy analyses and optimizations of the Rankine cycle. *Energy Convers Manage* 2013; 68: 82-88. <http://dx.doi.org/10.1016/j.enconman.2012.12.020>
- [9] Liu W, Liu ZC, Jia H, et al. Entransy expression of the second law of thermodynamics and its application to optimization in heat transfer process. *Int J Heat Mass Transfer* 2011; 54: 3049-59. <http://dx.doi.org/10.1016/j.ijheatmasstransfer.2011.02.041>
- [10] Chen LG, Wei SH, Sun FR. Constructal entransy dissipation minimization for 'volume-point'. *heat conduction. J Phys D Appl Phys* 2008; 41: 195506. <http://dx.doi.org/10.1088/0022-3727/41/19/195506>
- [11] Xie ZH, Chen LG, Sun FR. Constructal optimization for geometry of cavity by taking entransy dissipation minimization as objective. *Sci China Ser E Tech Sci* 2009; 52: 3413-504.
- [12] Chen Q, Ren JX. Generalized thermal resistance for convective heat transfer and its relation to entransy dissipation. *Chin Sci Bull* 2008; 53: 3753-61. <http://dx.doi.org/10.1007/s11434-008-0526-8>
- [13] Cheng XT, Liang XG. Entransy flux of thermal radiation and its application to enclosures with opaque surfaces. *Int J Heat Mass Transfer* 2011; 54: 269-78. <http://dx.doi.org/10.1016/j.ijheatmasstransfer.2010.08.026>
- [14] Cheng XT, Xu XH, Liang XG. Radiative entransy flux in enclosures with nonisothermal or non-grey, opaque, diffuse surfaces and its application. *Sci China Tech Sci* 2011; 54: 2446-56.
- [15] Cheng XT, Liang XG. Computation of effectiveness of two-stream heat exchanger networks based on concepts of entropy generation, entransy dissipation and entransy-

- dissipation-based thermal resistance. *Energy Convers Manage* 2012; 58: 163-70.
<http://dx.doi.org/10.1016/j.enconman.2012.01.016>
- [16] Cheng XT, Xu XH, Liang XG. Application of entransy to optimization design for parallel thermal network of thermal control system in spacecraft. *Sci China Tech Sci* 2011; 54: 964-71.
- [17] Qian XD, Li Z, Li ZX. Entransy-dissipation-based thermal resistance analysis of heat exchanger networks. *Chin Sci Bull* 2011; 56: 3289-95.
<http://dx.doi.org/10.1007/s11434-011-4733-3>
- [18] Cheng XT, Liang XG, Guo ZY. Entransy decrease principle of heat transfer in an isolated system. *Chin Sci Bull* 2011; 56: 847e54.
- [19] Cheng XT, Liang XG, Xu XH. Microscopic expression of entransy. *Acta Phys Sin* 2011; 60: 060512.
- [20] Xie ZH, Chen LG, Sun FR. Constructal optimization on T-shaped cavity based on entransy dissipation minimization. *Chin Sci Bull* 2009; 54: 4418-27.
<http://dx.doi.org/10.1007/s11434-009-0507-6>
- [21] Xiao QH, Chen LG, Sun FR. Constructal entransy dissipation rate minimization for "disc-to-point" heat conduction. *Chin Sci Bull* 2011; 56: 102-12.
<http://dx.doi.org/10.1007/s11434-010-4081-8>
- [22] Wu J, Liang XG. Application of entransy dissipation extreme principle in radiative heat transfer optimization. *Sci China Ser E-Tech Sci* 2008; 51: 1306-14.
- [23] Xia SJ, Chen LG, Sun FR. Optimization for entransy dissipation minimization in heat exchanger. *Chin Sci Bull* 2009; 54: 3572-8.
<http://dx.doi.org/10.1007/s11434-009-0299-8>
- [24] Li XF, Guo JF, Xu MT, Cheng L. Entransy dissipation minimization for optimization of heat exchanger design. *Chin Sci Bull* 2011; 56: 2174-8.
<http://dx.doi.org/10.1007/s11434-011-4489-9>
- [25] Qian XD, Li ZX. Analysis of entransy dissipation in heat exchangers. *Int J Thermal Sci* 2011; 50: 608-14.
<http://dx.doi.org/10.1016/j.ijthermalsci.2010.11.004>
- [26] Chen L, Wei S, Sun F. Constructal entransy dissipation rate minimization of a disc. *Int J Heat Mass Transfer* 2011; 54: 210-216.
<http://dx.doi.org/10.1016/j.ijheatmasstransfer.2010.09.050>
- [27] Chen L, Wei S, Sun F. Constructal entransy dissipation rate minimization of round tube heat exchanger cross-section. *Int J Therm Sci* 2011; 50: 1285-1292.
<http://dx.doi.org/10.1016/j.ijthermalsci.2011.02.025>
- [28] Wei SH, Chen LG, Sun FR. Constructal optimization of discrete and continuous-variable cross-section conducting path based on entransy dissipation rate minimization. *Sci China-Technol Sci* 2010; 53: 1666-1677.
- [29] Wei SH, Chen LG, Sun FR. Constructal entransy dissipation minimization for 'volume-point' heat conduction without the premise of optimized last order construct. *Int J Exergy* 2010; 7: 627-639.
<http://dx.doi.org/10.1504/IJEX.2010.034933>
- [30] Xia SJ, Chen LG, Sun FR. Optimal paths for minimizing entransy dissipation during heat transfer processes with generalized radiative heat transfer law. *Appl Math Model* 2010; 34: 2242-2255.
<http://dx.doi.org/10.1016/j.apm.2009.10.033>
- [31] Xiao QH, Chen LG, Sun FR. Constructal entransy dissipation rate minimization for a heat generating volume cooled by forced convection. *Chin Sci Bull* 2011; 56: 2966-2973.
<http://dx.doi.org/10.1007/s11434-011-4554-4>
- [32] Xiao QH, Chen LG, Sun FR. Constructal entransy dissipation rate minimization for heat conduction based on a tapered element. *Chin Sci Bull* 2011; 56: 2400-2410.
- [33] Xiao QH, Chen LG, Sun FR. Constructal entransy dissipation rate minimization for umbrella-shaped assembly of cylindrical fins. *Sci China-Technol Sci* 2011; 54: 211-219.
- [34] Xie ZH, Chen LG, Sun FR. Constructal optimization for geometry of cavity by taking entransy dissipation minimization as objective. *Sci China Ser E-Technol Sci* 2009; 52: 3504-3513.
- [35] Xie ZH, Chen LG, Sun FR. Comparative study on constructal optimizations of T-shaped fin based on entransy dissipation rate minimization and maximum thermal resistance minimization. *Sci China-Technol Sci* 2011; 54: 1249-1258.
- [36] Baierlein R. *Thermal Physics* (Cambridge, Cambridge University Press) 1999.
<http://dx.doi.org/10.1017/CBO9780511840227>
- [37] Ge Y, Chen L, Sun F, Wu C. Thermodynamic simulation of performance of an Otto cycle with heat transfer and variable specific heats for the working fluid. *Int J Therm Sci* 2005; 44: 506-511.
<http://dx.doi.org/10.1016/j.ijthermalsci.2004.10.001>
- [38] Ge Y, Chen L, Sun F, Wu C. The effects of variable specific-heats of the working fluid on the performance of an irreversible Otto cycle. *Int J Exergy* 2005; 2: 274-283.
<http://dx.doi.org/10.1504/IJEX.2005.007255>
- [39] Chen L, Ge Y, Sun F, Wu C. Effects of heat transfer, friction and variable specific-heats of a working fluid on performance of an irreversible Dual cycle. *Energy Convers Manage* 2006; 47: 3224-3234.
<http://dx.doi.org/10.1016/j.enconman.2006.02.016>
- [40] Al-Sarkhi A, Jaber JO, Abu-Qudais M, Probert SD. Effects of friction and temperature-dependent specific-heat of the working fluid on the performance of a Diesel-engine. *Appl Energy* 2006; 83: 153-165.
<http://dx.doi.org/10.1016/j.apenergy.2005.01.001>
- [41] Ge Y, Chen L, Sun F. Finite- time thermodynamic modeling and analysis for an irreversible dual cycle. *Math Comput Model* 2009; 50: 101-108.
<http://dx.doi.org/10.1016/j.mcm.2009.04.009>
- [42] Ge Y, Chen L, Sun F. Finite- time thermodynamic modeling and analysis for an irreversible Diesel cycle. *P I Mech Eng D-J Aut* 2008; 222: 887-894.
- [43] Ge Y, Chen L, Sun F. Finite- time thermodynamic modeling and analysis for an irreversible Otto- cycle. *Appl Energy* 2008; 85: 618-624.
<http://dx.doi.org/10.1016/j.apenergy.2007.09.008>

Received on 06-07-2014

Accepted on 16-07-2014

Published on 29-09-2014

DOI: <http://dx.doi.org/10.15377/2409-5818.2014.01.01.2>

© 2014 Emin Açıkkalp; Avanti Publishers.

This is an open access article licensed under the terms of the Creative Commons Attribution Non-Commercial License (<http://creativecommons.org/licenses/by-nc/3.0/>) which permits unrestricted, non-commercial use, distribution and reproduction in any medium, provided the work is properly cited.